

# SBOX1250kVA Technical Data Sheet

## Key words:

- Montage on a concrete shape foreseen with cables trench;
- Montage and replacement of the GFCs and Power Transformer through side doors;
- Lifting from the top, or from the bottom full equipped, by crane;

## 1. KIOSK CONSTRUCTION

The Kiosk		
1	Welded and reinforced steel frame , pre-coated with primer, and then painted color RAL9002, min. 240 micrometer , two component paint; The paint is C5M and ensures minimum 5 years in maritime environment warranty; The container frame is fitted with ISO corners top and bottom;	1 pcs.
2	External walls made of 1,5mm thickness corrugated steel sheet, (the height of corrugation is 25mm); the walls are continuously welded to frame, pre-coated with primer, and than painted color RAL9002, min. 240 micrometer outside and 180 micrometer inside, two component paint; The paint is C5M and ensures minimum 5 years in maritime environment warranty;	4 pcs.
3	External roof made of 1,5mm thickness corrugated steel sheet,(the height of corrugation is 25mm);the roof is continuously welded to frame, pre-coated with primer, and than painted color RAL9002, min. 240 micrometer outside and 180 micrometer inside, two component paint; The paint ensure minimum 5 years in maritime environment warranty;	1 pcs.
4	Internal Thermal insulated walls, 50mm thickness, made from metallic sandwich rock-wool type, REI WALL 50; painted RAL 9002, galvanized steel sheet;	4 pcs.
5	Internal Thermal insulated roof, 50mm thickness, made from metallic sandwich rock-wool type, REI WALL 50; painted RAL 9002, galvanized steel sheet;	1 pcs.
6	Outside floor made from metallic frames 2,5mm thickness continuously welded with cuttings for passing the cables and then painted color RAL9002, min. 240 micrometer, two component paint; insulation to the underside is done with 50mm rock-wool(on the outside); under the electric equipment aluminum caps with flanges (for cable access) are foreseen ;	1 pcs.
7	Inside floor made from aluminum demountable tiles 4 mm thickness	1 set
8	Metallic frame for montage of LV switchgear;	1 pcs.
9	Removable canopy above the access doors	1 pcs.

10	Simple Door for access in the equipment room made from aluminum profile; The door is foreseen with system to maintain open door 120°; Panic bar on indoor side;	1 pcs.	
11	Double Door made from aluminum profile for GFC replacement; The door is foreseen with system to maintain open door 120°;	2 pcs.	
12	Simple Door for access in the TRAO room made from aluminum profile; The door is foreseen with system to maintain open door 120°;	1 pcs.	
13	Simple Door for access in the TRAI room made from aluminum profile; The door is foreseen with ventilation grilles chevron type, antiinsect screen, system to maintain open door 120°;	1 pcs.	
14	GFC skid	2 pcs.	
15	Exhaust Gravitational Grilles made from aluminum profile meant for GFC ventilation;	6 pcs.	
16	Exhaust Chevron Grilles made from aluminum profile meant for GFC ventilation;	6 pcs.	
17	Filter Battery foreseen with 6 pcs. CamGT 4V-300 - F8 – code CGT0102111DE, 6 pcs. M5 -Pleat Green – code 10250003 , 2 pcs. ventilator K3G450AQ2431 code;	1 pcs.	
18	Ventilation grille fitted with chevron ventilation grilles for access to filter battery replacements; The grille is removable in order to ensure access for filter replace;	1 pcs.	
19	Protection Fence door in order to close the TRAI and filter battery area;	1 pcs.	
20	Plastic cover for 1000 kVA power transformer terminals;	2 pcs.	
21	Metallic plate located on the top of GFC in order to reduce the parasite flow;	1 pcs.	
22	Schneider Logo painted on 4 walls and on the roof;	1 pcs.	
<b>Main Equipment</b>			
1	RM6 NE-D - MV switchgear	1 pcs.	
2	Key exchange box interlocking RM6_Door TRAI_ LV CB1_ LV_ CB2 with key PROFALUX	1 pcs.	
3	Twincast TRAFO - TRAI -20 / 0,4 kV 1250 kVA MV / LV AF cast resin power transformer – fitted with MV surge arrester (FAI1);	1 pcs.	
4	GFC Galaxy 7000 G7TQ500CS	2 pcs.	
5	Twincast AUTOTRAFO - TRAO -0,4 / 0,44-0,69 kV 1000 kVA LV / LV AF cast resin power transformer	1 pcs.	
6	GCS Control & command cubicle	1 pcs.	
7	16kVA Auxiliary Transformer	1 pcs.	
8	LV surge arrester (FAI 2)	1 pcs.	
9	LVEDS switchgear	1pcs.	
10	LVD auxiliary	1 pcs.	
11	LVTP – CB box	1 pcs.	
12	Smoke detector composed from 1 pc. of CCT57055 and 2 pcs. of (CCT57056 + CCT57057)	1 pcs.	
13	Indoor Hygrotherm transducer, 4-20 mA – Jumo fabrication code 907020/11-2-22-005/000	2 pcs.	
14	Outdoor thermal transducer, 4-20 mA – Jumo fabrication code 902520/12-568-1003-1/330	2 pcs.	
15	Red, Blue Light column fitted with buzzer – outdoor montage; – composed of:	XVBC12 – fixing support;	1 pcs.
		XVBZ02 – black aluminum pipe for fixation;	1 pcs.
		XVBC21 – base and cover;	1 pcs.
		XVBC2B4 – red led lamp;	1 pcs.
		XVBC2B6 – blue led lamp;	1 pcs.

		XVBC9B – buzzer;	1 pcs.
		XVBC14 – cable in adaptor;	1 pcs.
		Auxiliary contact for coffret – code 0229 01 - Legrand fabrication;	1pcs.
<b>Accessories</b>			
16	Internal earth belt made of copper bar 25x5 mm with complete connection of all electrical equipment to the earthing belt,;		1 pcs.
17	External junction box for connection Internal earth belt with to external grounding circuit;		2 pcs.
18	2 x 36 w neon lamp for indoor lightening; 1 pc. of internal switch for internal lightening command;		5 pcs.
19	8w emergency lamp fitted with batteries for 1hour operating range;		3 pcs.
20	Switch located near entrance door, inside the container, meant for internal lightening command;		1 pcs.
21	230 V ac socket;		2 pcs.
22	EC -5N 5000 W TBD convector with thermo regulator ;		1 pcs.
23	Limit Switch XKCP roller plunger , 1NC + 1NO XCKP2012G11 – door open sensor;		1 pcs.
24	Regular locker with key		1pcs.
25	Internal showcase to display electrical diagrams, mounted on the internal wall;		1pcs.
26	Diagram case mounted on the internal wall;		1pcs.
27	Warning sign fixed on the entrance door;		1pcs.
28	Identification label		1pcs.
29	Rubber carpet on the walk alley		1pcs.
30	Cable glands for outgoing 3 cable – diameter 22-54mm;HRD 150-SG-3/22-54; Hauf Technik; under MVEDI panel;		1 pcs.
31	Cable glands for outgoing 3 cable – diameter 22-54mm; HRD 150-SG-3/22-54 ;Hauf Technik; under LVEDS		4 pcs.
32	Cable gland for secondary 4 cables – diameter 8-30mm; HRD 100-SG-4/8-30;Hauf Technik; under LVEDS		1 pcs.
33	Cable gland for secondary 6 cables – diameter 6-31mm; HRD 125-SG-6/6-31;Hauf Technik; underGCS		2 pcs.
34	Cable gland for secondary 4 cables – diameter 8-30mm; HRD 100-SG-4/8-30;Hauf Technik; underGCS		1 pcs.

## 2. TECHNICAL CHARACTERISTICS

Nr.	Feature	Values
1	Total Length	10.000 mm
2	Total Height	3.200 mm
3	Total Depth	2.440 mm
4	Total weight full equipped;	14,2 tones
5	Protection degree with grilles closed or open	IP 44
6	Combustibility class - according IEC 13501-2	A2
7	Smoke emission degree - according IEC 13501-2	S 1
8	Drops and/or burning particles - according IEC 13501-2	D0
9	Fire protection degree according IEC 13501-2	EN 60
10	Water permeability	C class
11	Thermal transfer type	10K

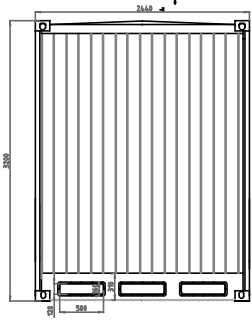
12	Designed to resist on earthquake on Mercalli intensity scale	VIII – S3a
13	Lifetime	25 years

### 3. OPERATING CONDITIONS

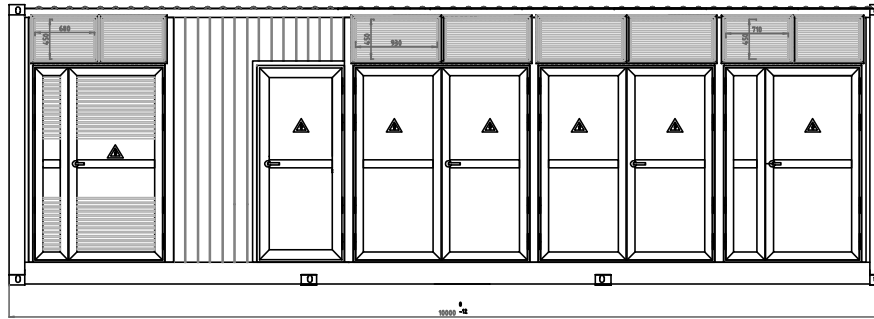
Nr.	Feature	Values
1	Mounting	Outdoor
2	Operating Conditions	sea salt C5M
3	Min/Max temperature	-10 °C / + 40°C
4	Average hottest temperature	+25 °C
5	Average relative humidity	95%
6	Maximum altitude	1000 m

1 | 2 | 3 | 4 | 5 | 6

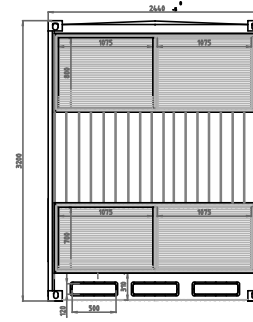
RIGHT VIEW



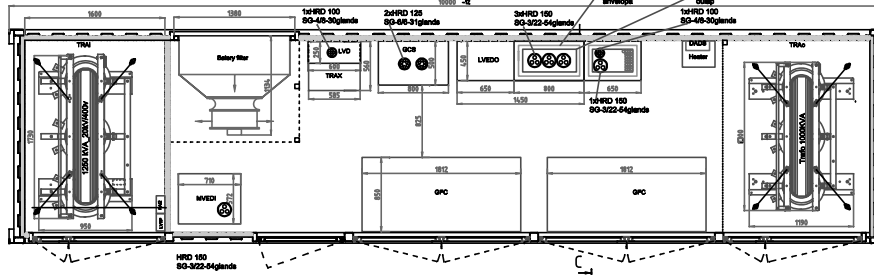
FRONT VIEW



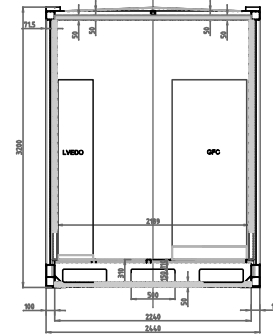
LEFT VIEW



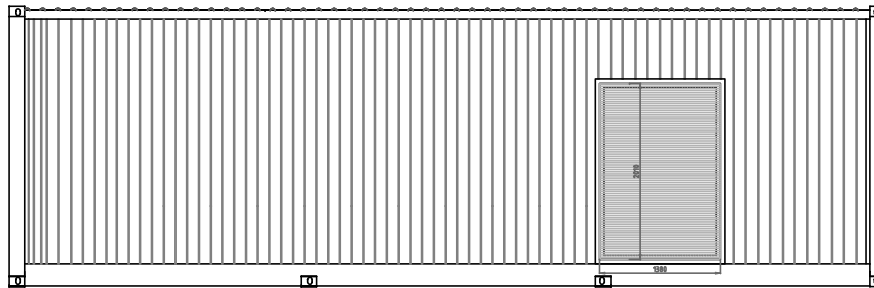
PLAN VIEW



Sect. C-C



REAR VIEW



NO	EQUIPMENT	QTY	HEIGHT mm	WIDTH mm	DEPTH mm	WEIGHT kg
1	GPC-Orbiter 1000	2	1800	1812	848	1420
2	TRAC-Instb 1200 KVA, 200V	1	2040	1700	950	3320
3	TRAC-Instb 1000 KVA	1	1800	1700	1180	2780
4	MVEDX-RMS-MED	1	1142	572	710	135
5	LVEDD	1	2100	1900	480	500
6	GPC	1	2100	800	300	180
7	LVCB-Instb	1	1000	600	250	80
8	Acc. Instb19 KVA	1	900	585	850	140
9	Heater	1	535	370	300	
10	DADB	1				
11	LVTP	1				
12	PLA 2	1				
13						
14						
15						

1 | 2 | 3 | 4 | 5 | 6