

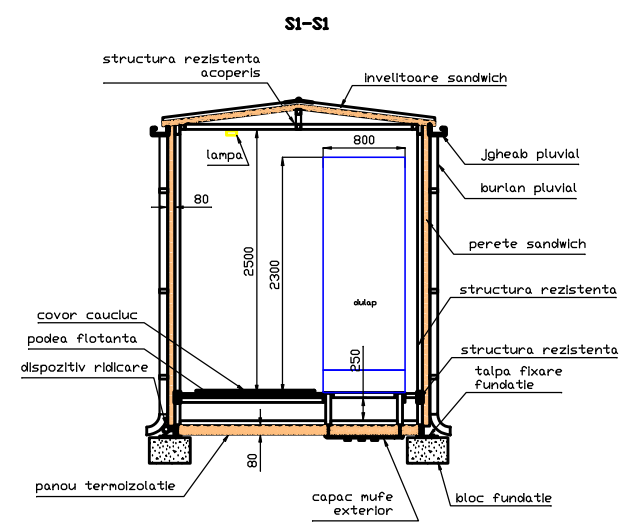
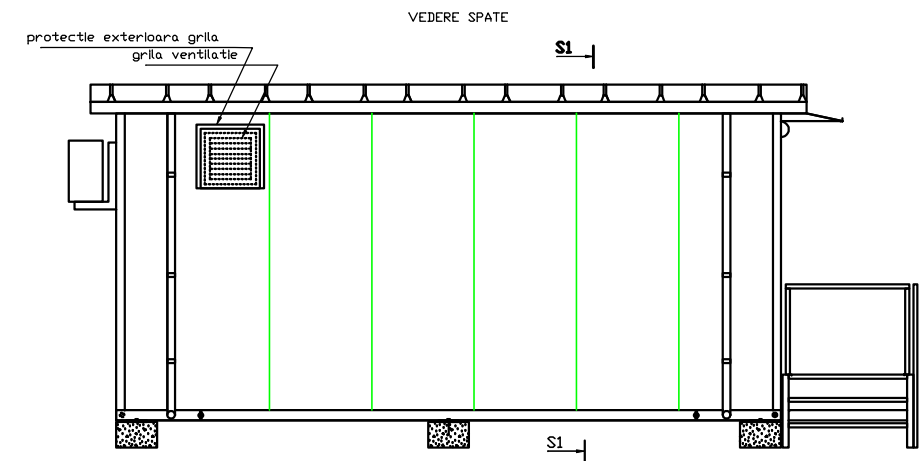
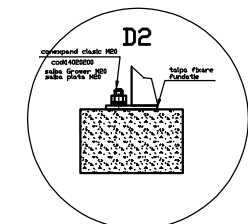
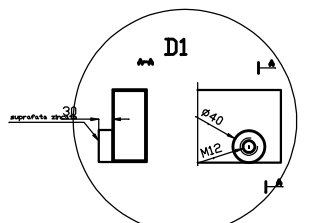
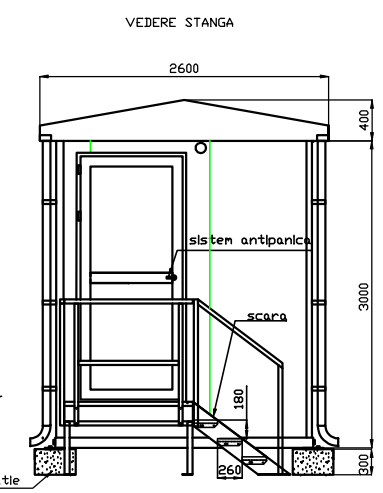
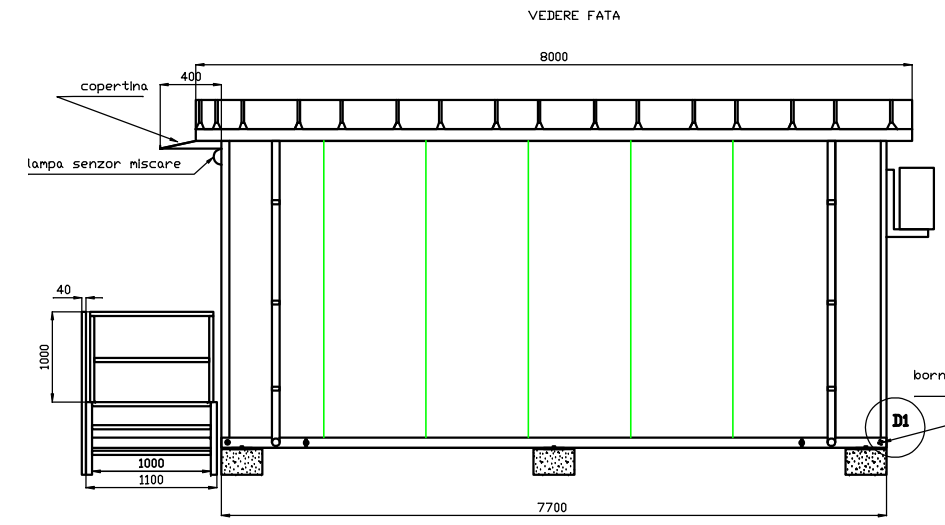
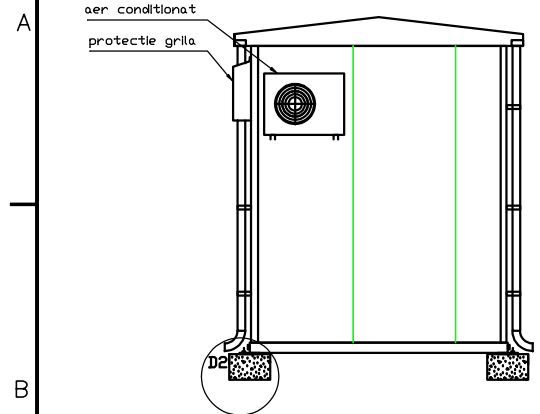
1 2 3 4 5 6

A

B

C

D



CONDITII TENNICE 1:  
 1. Scara va fi zincata termic (pasivat)  
 2. Vopsit (culoarea se va stabili de beneficiar)  
 3. Greutate 4 tone

CONDITII TENNICE 2:  
 USA SIMPLA -TIMPLARIE METALICA  
 -FATA DIN PANDU SANDWICH CU VATA MINERALA  
 -LUMINA USII 2400mm x 1000mm  
 -DIMENSIUNI (CU TDC) 2500mm x1100mm x 45mm  
 -MINER EXTERIOR  
 -BRASCA ANTPANICA CU YALA  
 -BARA ANTPANICA INTERIOR  
 -INCHIDERE IN3 PUNCTE  
 -AMORTIZOR HIDRAULIC  
 -BLOCUL IN POZITIECHIS 90°  
 GRILA DESUMARE  
 -PROTECTIE EXTERIORARA  
 -USITA INTERIORARA

PARDOSEALA - PLACI DIN CONGLIMERAT LEVINGS (PAL) 600mmx600mmx38mm  
 CU FATA DE ALUMINIU , ANTISTATIC  
 - COVOR CAUCIUC

<b>Supplier: SC ELECTROTEHNO SRL</b>		<b>Client:</b>	
I.O.:E 5517.1		P.O.:	
<b>Name: CABINA DE RELEE tip CONTAINER</b>		Project:	
Quantity:	Doc. code:	PI. 1/1	
Doc. name: DESEN CABINA		Revision:0	
Issued: Mihai Puiu	Checked: Radu Petru	Date: 10.08 2016	

1 2 3 4 5 6